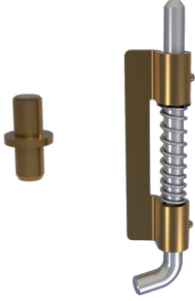


MM02.2.0.1,5

MM02.2.0.2,5

MM02.2.0.3,5

**YAYLI GİZLİ MENTEŞE
CONCEALED HINGE WITH SPRING**



150Kg.

MM12.2.1

**YAYLI GİZLİ MENTEŞE
CONCEALED HINGE WITH SPRING**



150Kg.

Kullanım Alanları

- * Elektrik Panoları
- * Makina Kapakları

Malzeme

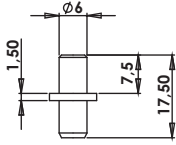
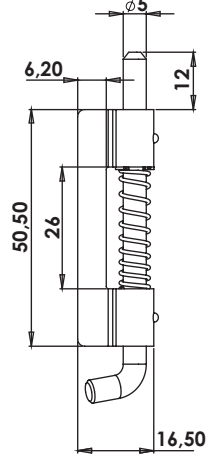
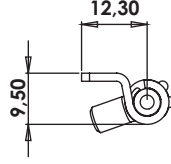
- * Gövde: St 37 Çelik Levha
- * Kaplama(MM02): Bakır
- * Kaplama(MM12): Çinko

Applications

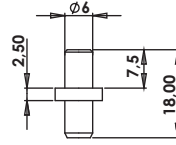
- * Electric Panels
- * Machinery Covers

Material

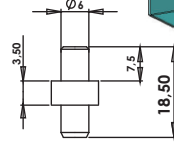
- * Body: Steel St 37
- * Finish(MM02): Cooper Plated
- * Finish(MM12): Zinc Plated



1,5



2,5



3,5

