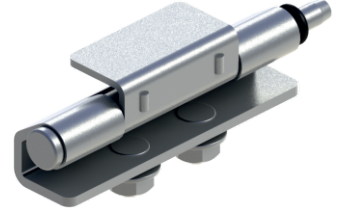


MG25.5.0.V1.1

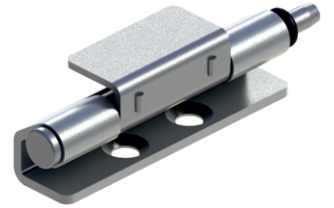
GİZLİ PANO MENTEŞESİ (Paslanmaz-Civatalı)
CONCEALED HINGE (Stainless Steel-With Screw)



450Kg.

MG25.5.0.V2.1

GİZLİ PANO MENTEŞESİ (Paslanmaz)
CONCEALED HINGE (Stainless Steel)



450Kg.

Kullanım Alanları

- * Elektrik Panoları
- * Makine Kapakları

Malzeme

- * Gövde: Paslanmaz Çelik (AISI 304)
- * Ara Parça: Paslanmaz Çelik (AISI 304)
- * Menteşe Dönme Açısı: 110°

Applications

- * Electric Panels
- * Machinery Covers

Material

- * Body: Stainless Steel (AISI 304)
- * Welding Part: Stainless Steel (AISI 304)
- * Hinge Rotation Angle: 110°