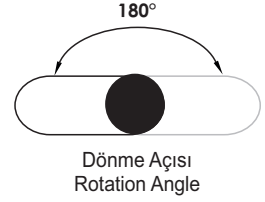
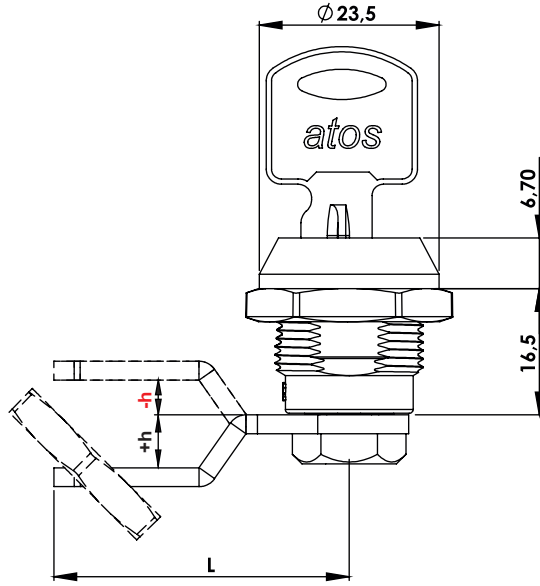
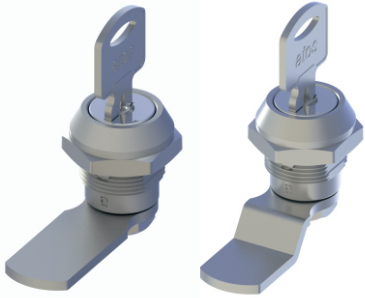


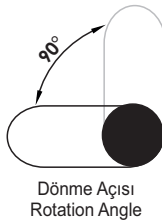
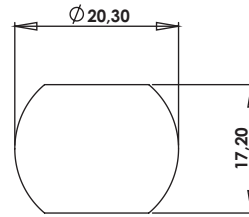
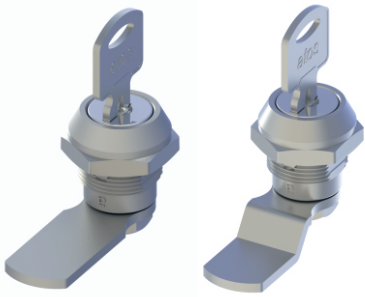
KM01

SİLİNDİRLİ MANDALLI KİLİT (180°)
CAM LOCK WITH CYLINDER (180°)

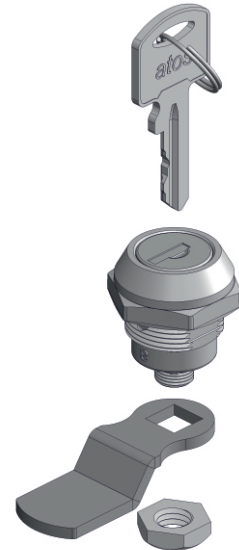


KM11

SİLİNDİRLİ MANDALLI KİLİT (90°)
CAM LOCK WITH CYLINDER (90°)



Geçiş Ölçüsü
Cut Out



Kullanım Alanları

- * Çelik Masa
- * Çelik Dolap
- * Makine Kapakları
- * Elektrik Panoları
- * Ahşap (KM21)

Malzeme

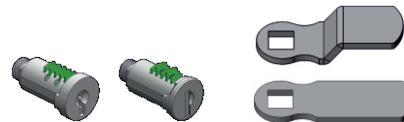
- * Gövde : Zamak
DIN-EN 1774-ZnAl4Cu1
- * Fişe : Zamak
DIN-EN 1774-ZnAlCu1
- * Dil (CC): Çelik
- * Kaplama: Krom

Applications

- * Steel Table
- * Steel Drawers
- * Machinery Covers
- * Electric Panels
- * Wooden (KM21)

Material

- * Body: Zamak
DIN-EN 1774-ZnAl4Cu1
- * Cylinder: Zamak
DIN-EN 1774-ZnAlCu1
- * Cam (CC): Steel
- * Finish: Chrome



| Grup Kodu | Malzeme | Yüzey Kaplama | Fişe Kodu | Dil Kodu | Anahtar | Koruma Derecesi |
|------------|----------|------------------|--|--|------------------------|---------------------------|
| Group Code | Material | Finish | Cylinder Code | Cam Code | Keys | Ingress Protection Rating |
| KM01 | .1 | .2 | .DD Sayfa: 2 - Tablo: A Page: 2 - Table: A | .CC Sayfa: 1 - Tablo: 6 Page: 1 - Table: 6 | .1 veya .2 .1 or .2 | .0 |
| KM11 | 1: Zamak | 2: Krom / Chrome | | | Adet / Pcs. | .1 |
| | | | | | | 0: Yok / No 1: IP65 |