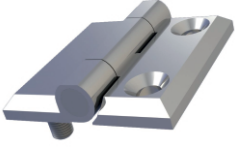


### MY4040.1.2.2

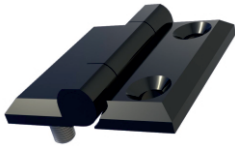
YAPRAK MENTEŞE (40\*40mm-Krom Kapl.-1/2 Civatalı)  
LEAF HINGE (40\*40mm-Chrome Plated-1/2 With Bolt)



200Kg.

### MY4040.1.5.2

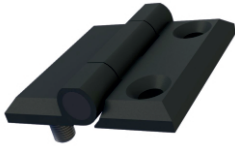
YAPRAK MENTEŞE (40\*40mm-Boyali-1/2 Civatalı)  
LEAF HINGE (40\*40mm-Black Coated-1/2 With Bolt)



200Kg.

### MY4040.35.0.2

YAPRAK MENTEŞE (40\*40mm-Plastik-1/2 Civatalı)  
LEAF HINGE (40\*40mm-Polyamide-1/2 With Bolt)



100Kg.

#### Kullanım Alanları

- \* Elektrik Panoları
- \* Makine Kapakları

#### Malzeme

- \* 1: Gövde Zamak  
DIN-EN 1774-ZnAl4Cu1
- 35: Gövde : Polyamide DIN-EN ISO  
1043-1 PA6 GFR30
- \* Civata: Çelik St 37
- \* Pim :Çelik St 37
- \* 2: Kaplama: Krom
- 5: Kaplama: Boyalı
- 0: Kaplama: Kaplamasız
- \* Menteşe Dönme Açısı: 180 °

#### Applications

- \* Electric Panels
- \* Machinery Covers

#### Material

- \* 1: Body: Zamak  
DIN-EN 1774-ZnAl4Cu1
- 35: Body: Polyamide DIN-EN ISO  
1043-1 PA6 GFR30
- \* Screw: Steel St 37
- \* Pin : Steel St 37
- \* 2: Finish: Chrome
- 5: Finish: Black Coated
- 0: Uncoated
- \* Hinge Rotation Angle: 180 °

