

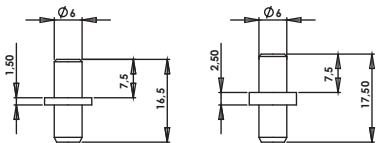
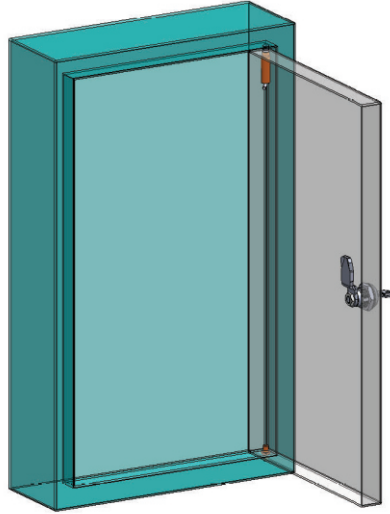
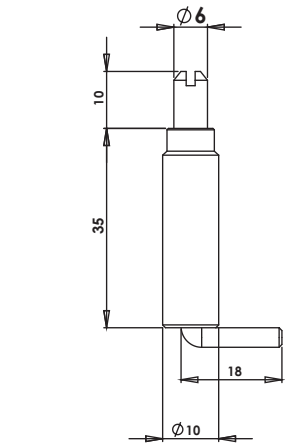
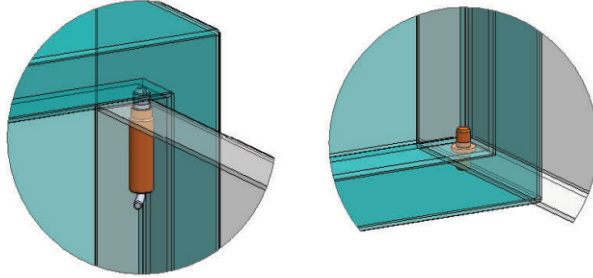
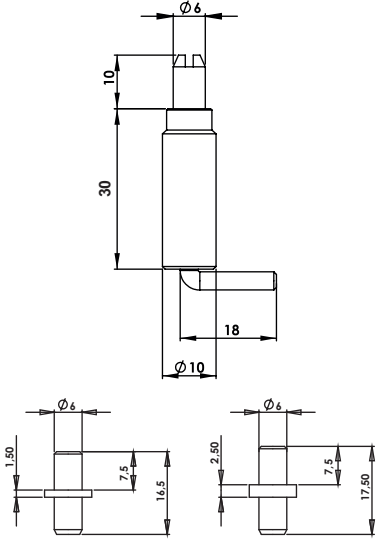
(MM01) **MM30.2.1.10**

**YAYLI MİL MENTEŞE (10mm)**  
**HINGE WITH SPRING (10mm)**



(MM01) **MM35.2.1.10**

**YAYLI MİL MENTEŞE (10mm)**  
**HINGE WITH SPRING (10mm)**



**Kullanım Alanları**

- \* Elektrik Panoları
- \* Makine Kapakları

**Malzeme**

- \* MM30 / MM35 Gövde: 10mm St 37 Çelik
- \* MM02 Gövde: St 37 Çelik Levha
- \* Gövde Kaplama: Bakır
- \* Diğer Parçalar: Çinko

**Applications**

- \* Electric Panels
- \* Machinery Covers

**Material**

- \* MM30 / MM35 Body: 10mm Steel St 37
- \* MM02 Body: Steel St 37
- \* Body Finish: Cooper Plated
- \* Other Metarials: Zinc Plated