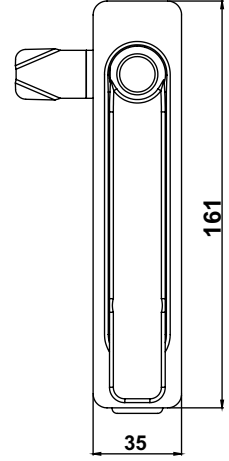
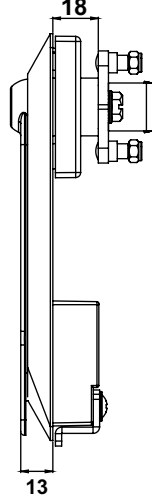
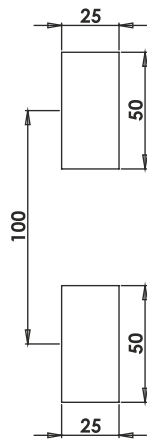


**KI27**

IP65

**KOLLU PANO KİLİDİ 27  
SWING HANDLE 27**

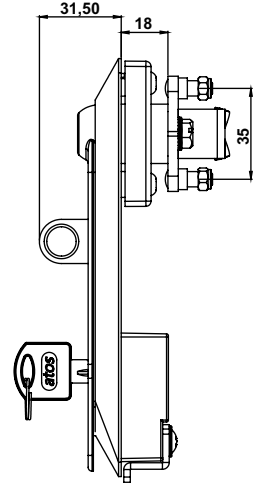
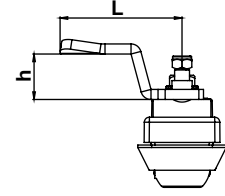
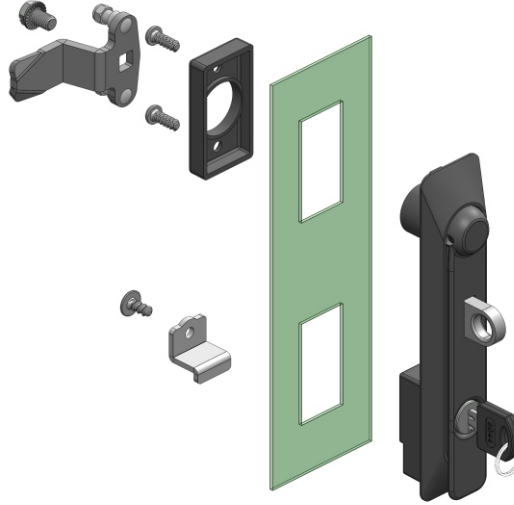


Geçiş Ölçüsü  
Cut Out

**KI29**

IP65

**KOLLU PANO KİLİDİ 29 (Asma Kilit Hamili)  
SWING HANDLE 29 (For Padlock)**



**Kullanım Alanları**

- \* Elektrik Panoları
- \* Makina Kapakları
- \* Bilgisayar Kabinleri

**Malzeme**

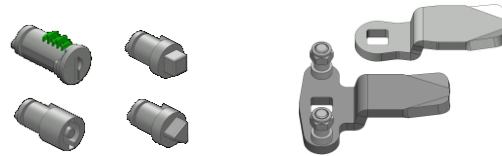
- \* Gövde: Polyamide  
DIN-EN ISO 1043-1 PA6 GFR30
- \* Kol : Polyamide  
DIN-EN ISO 1043-1 PA6 GFR30
- \* Dil (CC):Çelik veya Plastik /
- \* Conta : PVC
- \* Asma Kilit Hamili : Zamak  
DIN-EN 1774-ZnAl4Cu1

**Applications**

- \* Electric Panels
- \* Machinery Covers
- \* Rack Cabinets

**Material**

- \* Body: Polyamide  
DIN-EN ISO 1043-1 PA6 GFR30
- \* Handle: Polyamide  
DIN-EN ISO 1043-1 PA6 GFR30
- \* Cam (CC): Steel or PA6
- \* Seal: PVC
- \* Padlock :Zamak  
DIN-EN 1774-ZnAl4Cu1



Grup Kodu	Fişe-Göbek Kodu	Dil Kodu
Group Code	Cylinder-Driver Code	Cam Code
KI27	.00 / .DD	.CC
KI29	Fişeler - Göbekler için Sayfa: 2 - Tablo: A/B For cylinders - drivers please check Page: 2 - Table: A/B	Diller için Sayfa:1 - Tablo: 1 /2 /3 For cams please check Page:1 - Table: 1 /2 /3
	.00: Fişesiz / Without Cylinder	