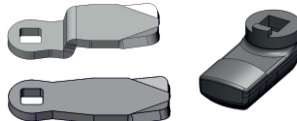
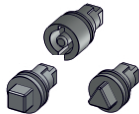
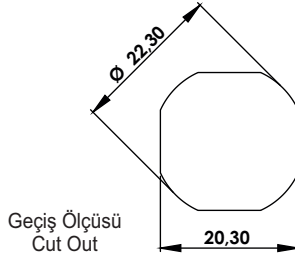
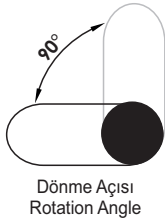
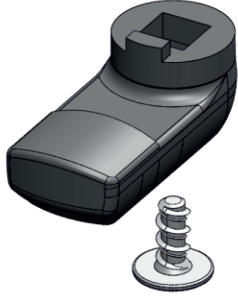
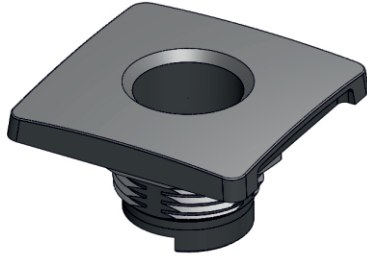
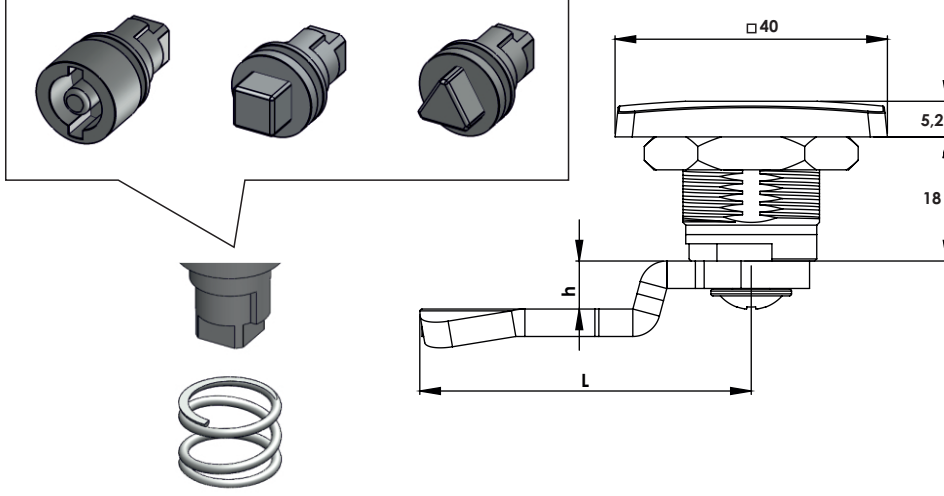


Göbekler için Sayfa: 2 - Tablo: B
For drivers please check Page: 2 - Table: B



Grup Kodu	Malzeme	Yüzey Kapalama	Dil Kodu	Koruma Derecesi
Group Code	Material	Finish	Cam Code	Ingress Protection Rating
KY4DD Göbekler için Sayfa: 2 - Tablo: B For drivers please check Page: 2 - Table: B	.35	.0	.CC Diller için Sayfa:1 - Tablo: 1/3 For cams please check Page:1 - Table: 1/3	.0
	.23	.2		.1
		.5		
	35: Polyamide	0: Kaplamasız / Uncoated		0: Yok / No 1: IP65
23: Zamak	2: Krom / Chrome 5: S.Boyalı / Black Coated			

KY4DD.35

YAYLI PANO KİLİDİ (Kare - Plastik)
QUARTER TURN WITH SPRING (Square - Polyamide)



Kullanım Alanları

- * Elektrik Panoları
- * Makine Kapakları

Malzeme

- * Gövde ve Göbek: Polyamide
DIN-EN ISO 1043-1 PA6 GFR30
- * Dil (CC): Çelik veya Plastik

Applications

- * Electric Panels
- * Machinery Covers

Material :

- * Body & Driver: Polyamide
DIN-EN ISO 1043-1 PA6 GFR30
- * Cam (CC): Steel or PA6

KY4DD.23

YAYLI PANO KİLİDİ (Kare - Plastik)
QUARTER TURN WITH SPRING (Square - Polyamide)



Kullanım Alanları

- * Elektrik Panoları
- * Makine Kapakları

Malzeme

- * Gövde: Polyamide
DIN-EN ISO 1043-1 PA6 GFR30
- * Göbek : Zamak
DIN-EN 1774-ZnAl4Cu1
- * Dil (CC): Çelik veya Plastik

Applications

- * Electric Panels
- * Machinery Covers

Material :

- * Body: Polyamide
DIN-EN ISO 1043-1 PA6 GFR30
- * Driver: Zamak
DIN-EN 1774-ZnAl4Cu1
- * Cam (CC): Steel or PA6